

P.U.D.
BOCA CLUB COLONY PHASE I
A PLAT OF A PORTION OF SECTION 34, TWP. 47S., RGE. 42E.
AND ALSO BEING A REPLAT OF A PORTION OF TRACT 74, BOCA DEL MAR NO. 7, AS RECORDED
IN PLAT BOOK 30, PAGES 210-217 OF THE PUBLIC RECORDS OF PALM BEACH COUNTY, FLORIDA
PALM BEACH COUNTY, FLORIDA

JOHN A. GRANT, JR., INC. CONSULTING ENGINEERS & LAND SURVEYORS BOCA RATON, FLORIDA

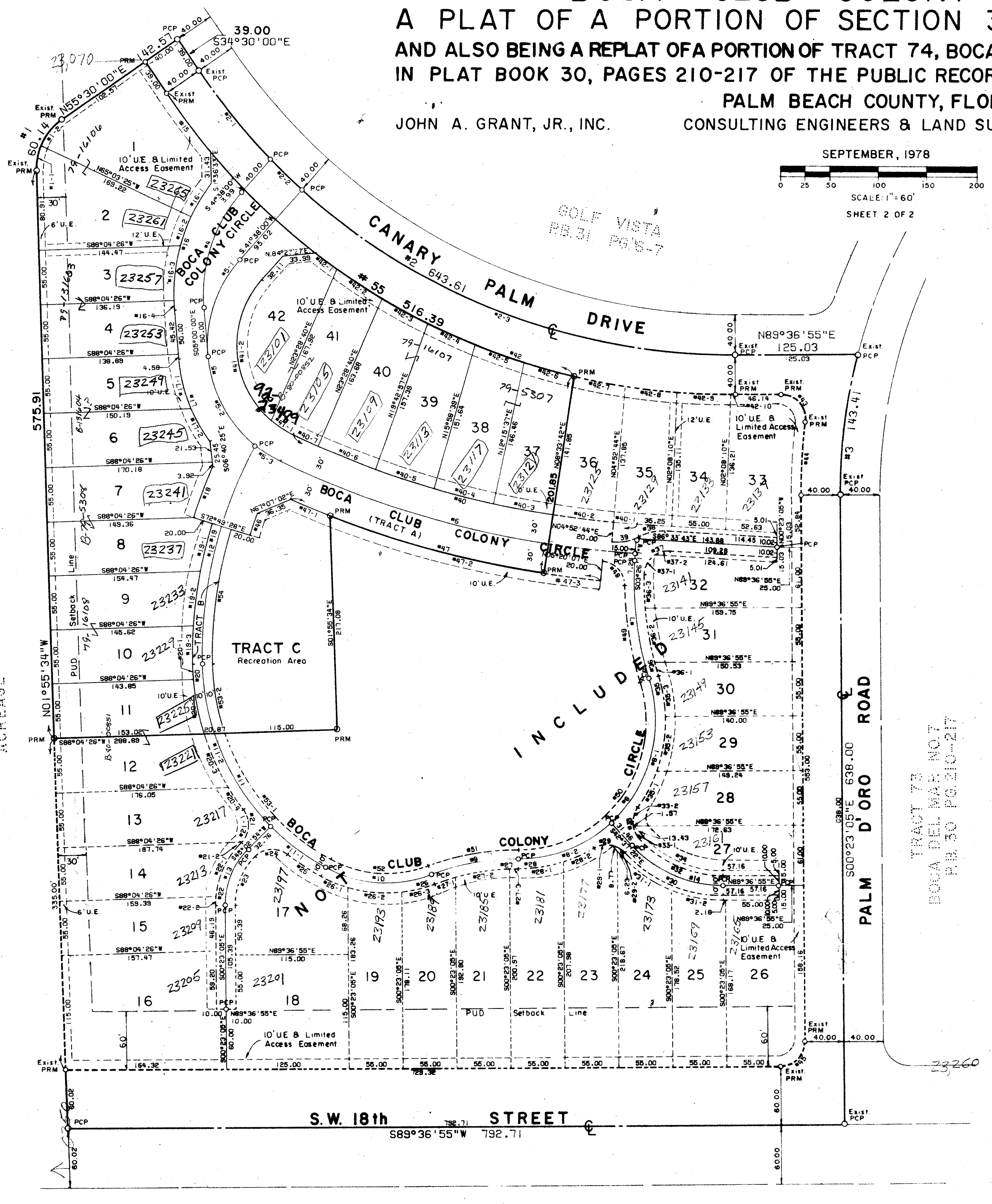
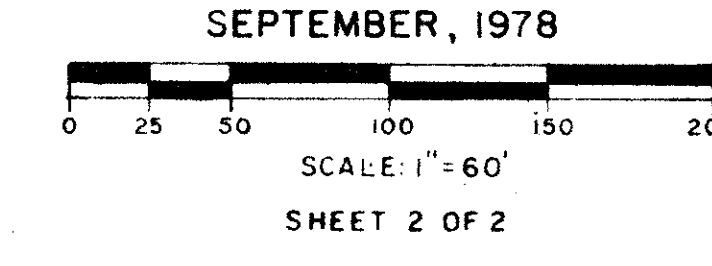


TABLE OF ARCS table with columns: NUMBER, RADIUS, ARC, DELTA, TAN, CHORD, CHORD BRNG.

Summary table with columns: ITEM, VALUE. Includes: TOTAL AREA TRACT 74 (14.042 AC.), DENSITY PROPOSED, TRACT 74 (3.42 UNITS/AC.), AREA OF LOTS, THIS PLAT (3.494 AC.), AREA, PRIVATE ROAD R/W (1.106 AC.), TRACT C (RECREATION AREA) (0.600 AC.), TOTAL AREA, THIS PLAT (5.200 AC.), NO. UNITS PROPOSED, THIS PLAT (17), DENSITY PROPOSED, THIS PLAT (3.27 UNITS/AC.), LAND USE - SINGLE FAMILY.

NOTES
Bearings shown hereon are based on bearings recorded by BOCA DEL MAR NO. 7 in Plat Book 30, Pages 210 - 217, Public Records of Palm Beach County, Florida.

There will be no building, trees, or shrubs placed on easements.
P. R. M. Indicates Permanent Reference Monument
P. C. P. Indicates Permanent Control Point
I. E. Indicates Utility Easement
D. E. Indicates Drainage Easement
L. E. Indicates Landscape Easement

This instrument was prepared by:
John A. Grant, Jr., John A. Grant, Jr., Inc.
3333 North Federal Highway, Boca Raton, Fla.

39
37/86

Boca Club Colony Phase I - Boca PUD 0205-005